



JOE GRIEVE

THE OTHER SIDE

A SOLO EXHIBITION PRESENTED BY
COLSTOUN ARTS

THE OTHER SIDE

10:00AM - 3:00PM | 05.05.24 - 19.05.24
COACH HOUSE | COLSTOUN HOUSE | HADDINGTON | EH41 4PA | SCOTLAND

CONTENTS

EXHIBITION TEXT	<u>3</u>
EXHIBITION ARTWORK	<u>4-21</u>
ARTIST INFORMATION	<u>22-23</u>
COLSTOUN INFORMATION	<u>24</u>
SALES ENQUIRY INFORMATION	<u>25</u>



COLSTOUN ARTS

THE OTHER SIDE

EXHIBITION TEXT

East Lothian's Colstoun House presents *The Other Side*, Joe Grieve's first Scottish Solo Exhibition, welcoming the viewer to explore the dualistic expressions the artist finds within the natural world and humanities' physical and metaphysical imprint upon it. Hosted in The Coach House, it marks the first in a series of annual Colstoun Arts exhibitions.

The Other Side, comprising a series of new oil paintings, some involving a drawn figurative compositional charcoal underlayer, consider Grieve's immersive relationship with, and memories of, landscapes within the British Isles, and their corruption and fragmentation over his lifetime.

Grieve presents visible and non-visible networks of life which make up our natural reality. Two worlds; a surface landscape, and a distorted psychedelic network more closely connected to nature buried beneath the earth, blurring the line between the two. Grieve's work visually connects opposites, merging the peace and fury of peaks and depths, mountains and oceans, foregrounds and horizons, and tangible and intangible currents, notable in the rhythmic oceans and skylines of his painting.

The energy in Grieve's painting comes from conflicts between representation and abstraction, reducing natural detail in certain paintings to better explore the sensations and feelings of landscapes, with sharper explorations of dark and light and fore and background shadowing to present depth, and display his extensive use of layering. This contrasts directly with his more representative, and novel, inclusion of manmade structures dwarfed by the warped perspective of the surrounding landscape. These figurative elements epitomise the relationship between the human reality of destruction and expansion, beneath the Earth's ultimate power and deific grandeur.

Grieves' work pays no reverence to national borders or other socioeconomic constructs, instead offering painterly appreciation for the harmony and escape these landscapes offer, whilst highlighting their fragility. The paintings in this exhibition invite us to witness Grieve's perceived realities of surreal, spiritual, and philosophical landscapes, homed in relatable environments. *The Other Side* sees Grieve's understanding of the fragmentation of land grow and give him space to expand his practical techniques and subjective supernatural surrealities, to discover the other side.

Jack Trodd | Residency Director | Curator

COLSTOUN ARTS



Colstoun
Oil on Canvas
159 x 177.5cm
2024
£5500.00



End of the Road

Oil on Canvas

161 x 143cm

2024

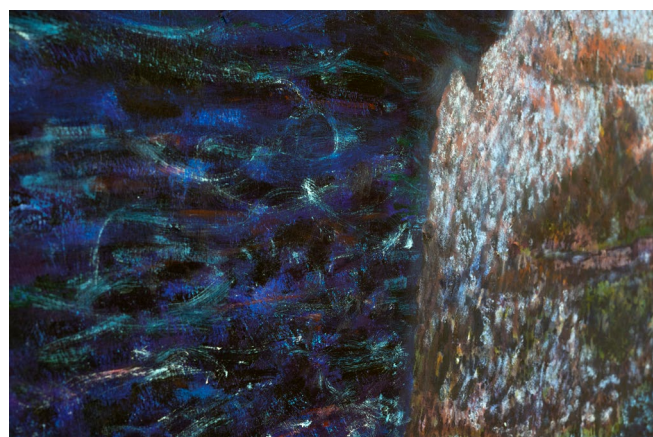
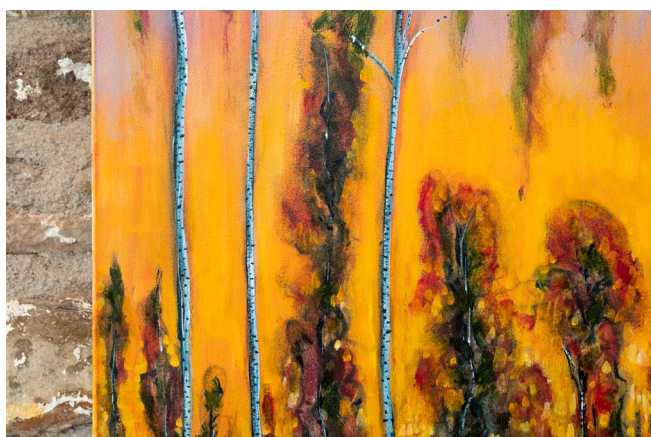
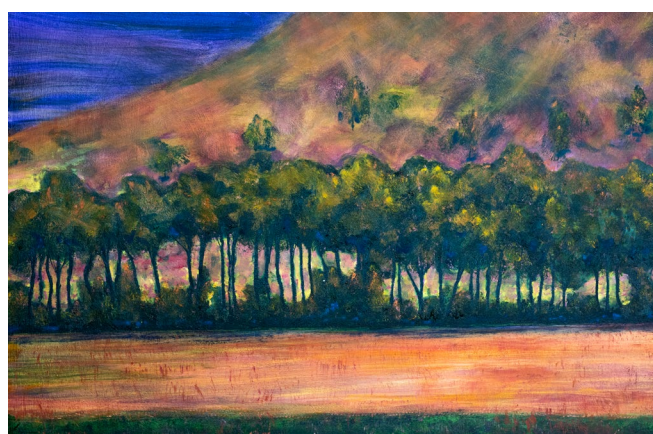
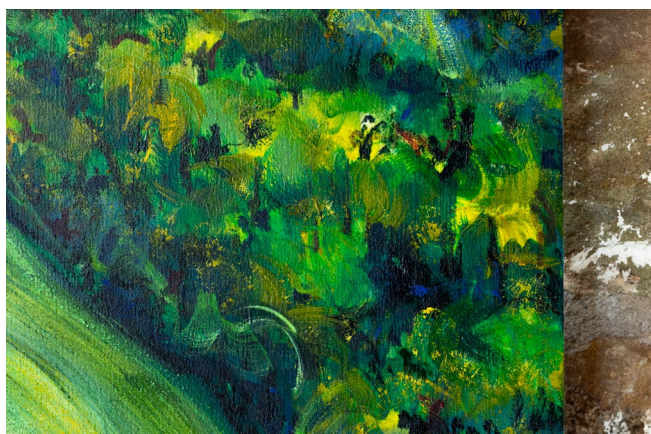
£5000.00



The Law
Oil on Canvas
210 x 180cm
2024
£7250.00



Bass Rock
Oil on Canvas
210 x 180cm
2024
£7250.00





Bask in the Bubble Plum

Oil on Canvas

150 x 180cm

2024

£5500.00



Heather Moorland

Oil on Canvas

147 x 210cm

2022

SOLD



Spring Springs

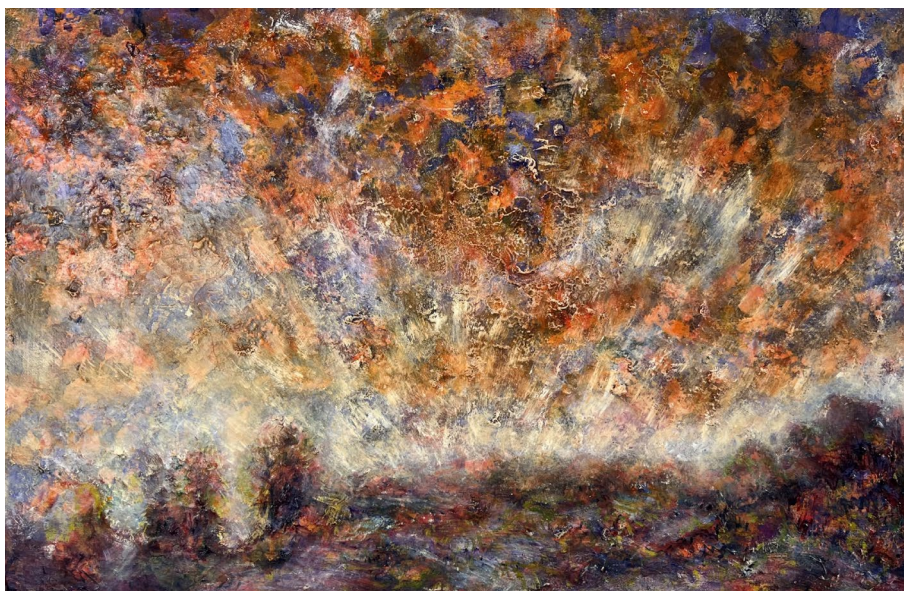
Oil on Canvas

200 x 51.5cm

2024

£3000.00





With my Feet Off the Ground

Oil on Canvas

40 x 60cm

2024

SOLD



River Painting

Oil on Canvas

76 x 63.5cm

2022

SOLD



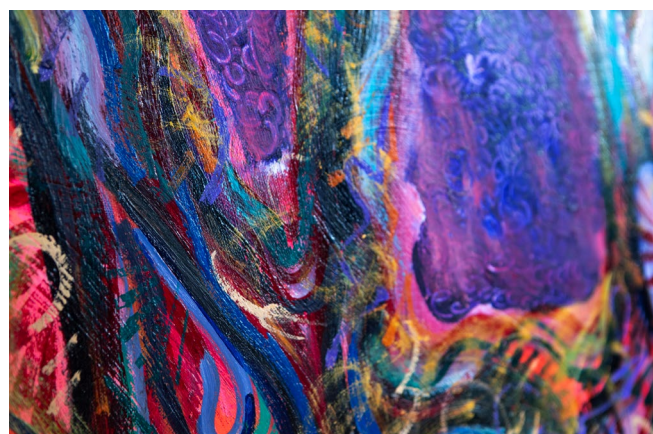
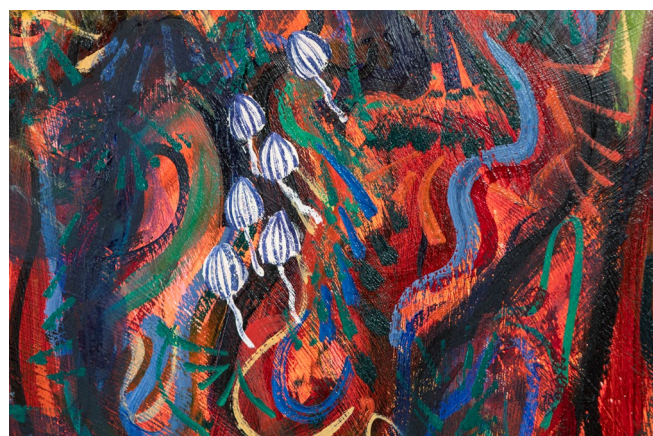
The Other Side

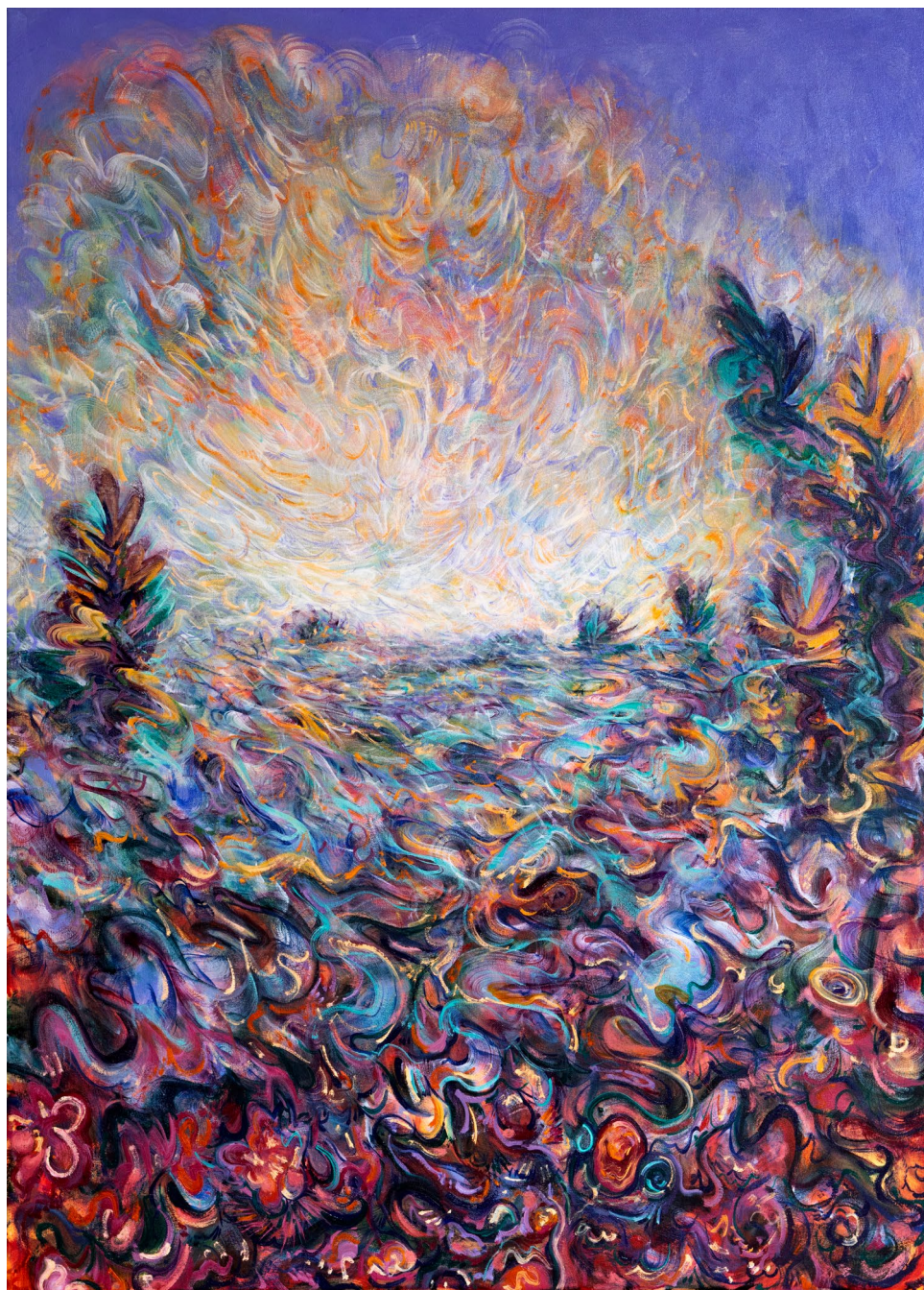
Oil on Canvas

245 x 460cm

2022

£15000.00





Fight for Light

Oil on Canvas

147 x 105cm

2024

£4000.00



Chaos of Clouds, my Beautiful Rainbow

Oil on Canvas

180 x 185cm

2024

£6500.00



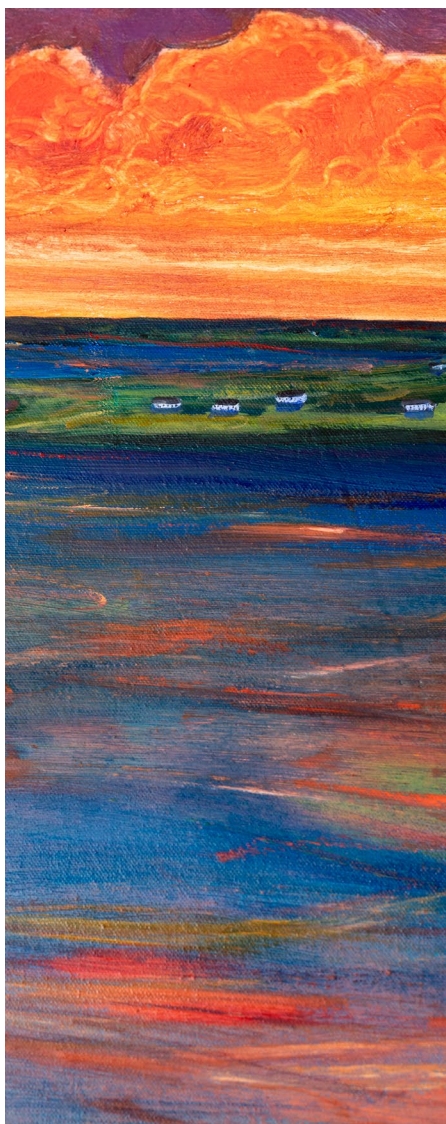
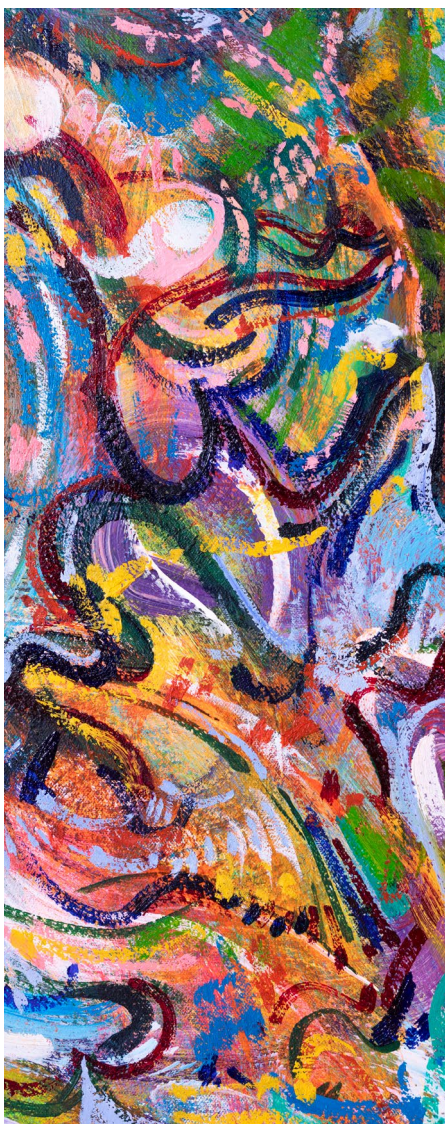
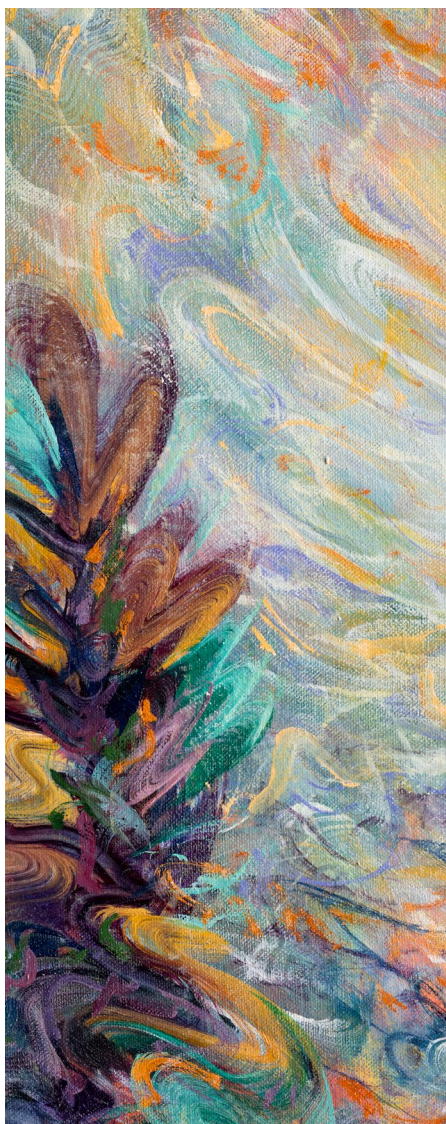
Wicked Waters Edge

Oil on Canvas

152 x 243cm

2023

£8000.00





Roads to Roam

Oil on Canvas

152 x 243cm

2023

£8000.00



JOE GRIEVE

Joe Grieve's works represent the ever growing and changing culmination of his recent exploration into the landscapes of the planet, the wilds of which he treks voraciously. Joe finds himself instinctively drawn toward landscape painting due to the emotional reverence and painterly freedom it enables. His process is a balance between instinctive, reactive movements and slower, heavily considered marks, built up in countless layers. Grieve's work can be read as a modern interpretation of the Lebensreform movement of the mid-nineteenth and early twentieth century, an exploration in the social politics of land.

Grieve paints fragments of complete landscapes, using what's left of the land publicly available and creating the rest in his mind. Grieve is interested in communicating the chaos and sensation of the natural world, rather than recreating what the eye sees. These distorted realities are analogous of a damning social climate, becoming surreal supernaturalities that seek to disassemble a false disengagement from nature.

Grieve wishes for his painted scenes to be beautiful, mirroring his feelings toward the natural world. A constant focus in his work is sunlight, both the representation of it in the scenes and the effects it has on nature. Fleeting moments of sunrise and sunset and other intangible natural sensations are projections he aims to channel through his work.

BIOGRAPHY

Joe Grieve (b. UK) holds a First-Class Honours Degree from the City & Guilds Art School in London. Grieve currently lives and works in London. Grieve held his first Solo exhibition at the Artisan Space (2019).

After graduating in 2022, Grieve held his first sell-out solo exhibition Somewhere Near Perception with BWG Gallery. Grieve held a large-scale 73 painting solo exhibition Between Place & Time with BWG Gallery (2023). He was part of the group exhibition Into the Cosmere (2021). 2024 will see Grieve hold a solo exhibition at Scotland's Colstoun Arts and will feature work in group exhibitions in London and Canada. Grieve attended the Blackwater Valley Residency in Ireland and Coulston Artist Residency in Scotland (2022). Grieve's painting is held in collections globally, with artwork on 5 continents and in private collections in over 20 countries. Notable Collections include the Nixon Collection and the Colstoun Collection.

ARTIST INFORMATION

COLSTOUN HOUSE



Colstoun Arts and the Colstoun Artist Residency, founded by Colstoun Owner, Artist Manager & Collector McLean Sinclair Parry, is located in ancient family home Colstoun House, in the Scottish countryside.

Thirty minutes east of Edinburgh, underneath the Lammermuir Hills. Colstoun House offers a vast rural landscape, sitting in the heart of 2,000 acres of rolling countryside, farmland and woodland, underneath some of the most beautiful moorlands by the sea.

Since the day it was built Colstoun House has been home to the Broun's. For over 900-years the history and legend has provided the backdrop for a truly special atmosphere of home and heartland.

Colstoun House is also home to Colstoun Gardens, grounds subject to a long-term restoration & redevelopment plan. Surrounded by 100 acres of Victorian Parkland, the sustainably focussed care of this landscape has already progressed 50 acres around the house into wild meadow over the last 3 years.

You will notice pears at Colstoun. The Brouns were given 'The Pear' by Hugo de Gifford who was reputed to be a wizard. The Brouns have protected this Pear for centuries, and the full story of The Pear is only told at the house.

Home to a peaceful pace of life, with farm work and public events casually crossing resident' paths as the seasons cycle, Colstoun is a bastion of scenery, solitude, immersion and introspection for our artists to work within.

COLSTOUN ARTS



COLSTOUN ARTS

THE OTHER SIDE

JOE GRIEVE



For sales enquiries & private appointments contact Colstoun Arts Founder:

McLean Sinclair Parry
mclean@colstoun.co.uk
@colstounarts

www.colstoun.co.uk